

# 2<sup>nd</sup> Annual Nourish Network Golf Classic

**Lighting the way to positive change.**

Join us for the 2<sup>nd</sup> Annual Nourish Network Golf Classic—a powerful drive toward safe, affordable housing across New Hampshire and Maine.

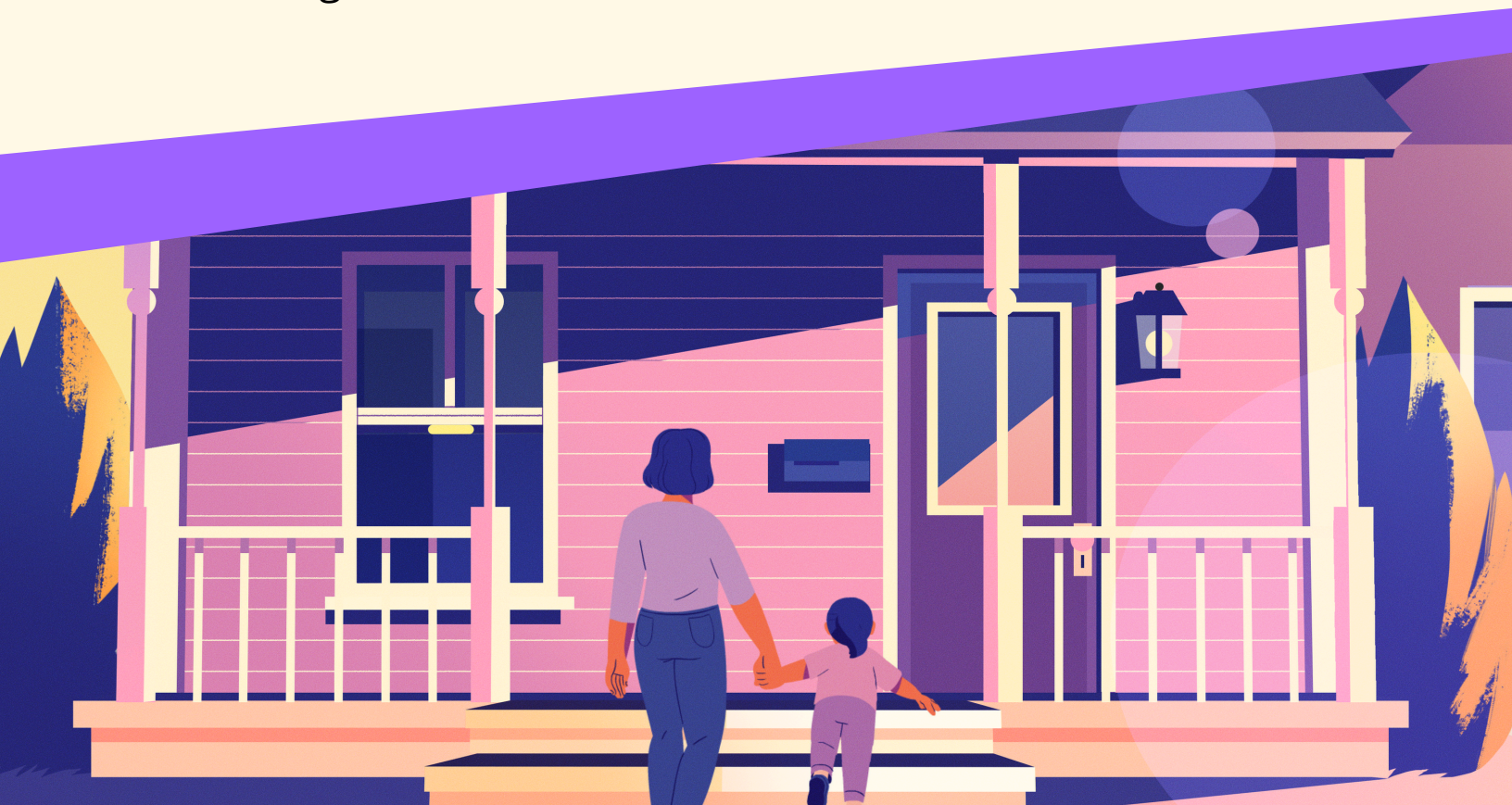
This year marks the launch of our bold **50-in-5 Initiative**, aiming to place **50,000 individuals in stable affordable homes in the next five years.**

Your participation fuels nonprofits and programs working to make housing more accessible and communities more secure.

**August 1, 2025 | Breakfast Hill Country Club, Greenland NH**

7:30 AM | Registration

9:00 AM | Shotgun Start



# Our Impact

## Be A Catalyst for Community Transformation.

Proceeds from the tournament directly support our 50-in-5 Housing Initiative, fueling high-impact projects across the housing continuum in New Hampshire and Maine. From emergency shelter to homeownership, your participation helps fund critical services, empower mission-driven developers, and provide stability for families on the brink.

By bringing together business leaders, nonprofit partners, and passionate community members, the tournament not only raises vital funds—it builds lasting momentum toward our Vision 2030: creating housing stability for 50,000 individuals and families.



For more information, please contact our Advancement Director, Emily Moore, at [emily.moore@lighthousecu.org](mailto:emily.moore@lighthousecu.org).



# Nourish Network Golf Classic

## 2025 Sponsorship Opportunities . . . . .

### PRESENTING MISSION SPONSOR

**\$25,000 | EXCLUSIVE**

- Exclusive sponsorship with prominent branding on event materials, signage, website, and social media
- Naming rights to the event
- Opportunity for the presenting sponsor's CEO to speak during the event
- Verbal recognition during the program
- Post-event recognition in the Lighthouse Credit Union Foundation's newsletters and annual donor impact report
- Co-branded backdrop for photo opportunities during and after the event
- Opportunity to attend an exclusive CEO Collaborative dinner the night prior to the event (2 seats)
- Branded volunteer shirts with company logo
- 1 foursome (4 golfers)

### GOLD SPONSOR

**\$15,000 | 3 AVAILABLE**

- Significant branding exposure on the course (signage on 3 holes, banners, etc.)
- Logo recognition on promotional materials, website, and event signage
- Verbal recognition during the program
- Post-event recognition in the Lighthouse Credit Union Foundation's newsletters and donor impact report
- Opportunity to attend an exclusive CEO Collaborative dinner the night prior to the event (2 seats)
- **Choice of one (1) unique logo placement:**
  - Branded Apparel Sponsor
  - Golf Cart Sponsor
  - Swag Bag Sponsor
- 1 foursome (4 golfers)

### SILVER SPONSOR

**\$10,000 | 5 AVAILABLE**

- Logo recognition on promotional materials, foundation website, event website, and event signage
- **Choice of one (1) unique logo placement:**
  - Grill Station Sponsor
  - Breakfast Sponsor
  - Course Contest Sponsor
  - Beverage Cart Sponsor
  - Post- Golf Reception
- Sponsor-provided items in giveaway bags (Qty. of 125)
- 1 foursome (4 golfers)

### HOLE SPONSOR

**\$5,000 | 18 AVAILABLE**

- Logo on tee or green sign displayed with prominent placement
- Logo recognition on the website, and event signage.
- Sponsor-provided items in giveaway bags (Qty. of 125)
- 1 twosome (2 golfers)

### COMMUNITY IMPACT SPONSOR

**\$2,500 | 10 AVAILABLE**

- Recognition in the digital event program and website
- Digital Ad included during the rotating program

# Nourish Network Golf Classic

## 2025 Sponsorship Pledge Form



- ☐ Yes, I would like to sponsor the 2025 Nourish Network Golf Classic.
- ☐ No, sadly I am unable to sponsor. I would like to make a donation in the amount of: \_\_\_\_\_

### 2025 Nourish Network Golf Classic Sponsorship Levels – Please select your preferred sponsorship option:

- ☐ Presenting Sponsor I \$25,000
- ☐ Gold Sponsor I \$15,000 I Choice of unique logo placement: \_\_\_\_\_
- ☐ Silver Sponsor I \$10,000 I Choice of unique logo placement: \_\_\_\_\_
- ☐ Hole Sponsor I \$5,000
- ☐ Community Impact Sponsor I \$2,500
- ☐ Additional Golfers I \$250 I Quantity: \_\_\_\_\_

### Contact Information:

Company Name: \_\_\_\_\_

Contact Person: \_\_\_\_\_ Title: \_\_\_\_\_

Mailing Address: \_\_\_\_\_

City, State, Zip: \_\_\_\_\_

Email: \_\_\_\_\_ Phone: \_\_\_\_\_

- ☐ Enclosed is our sponsor check (made payable to "Lighthouse Credit Union Foundation").

### Please provide an invoice to the email address listed above.

Name as it appears on card: \_\_\_\_\_

Billing Address (if different than above): \_\_\_\_\_

Card Number: \_\_\_\_\_ Exp.: \_\_\_\_\_ CCV: \_\_\_\_\_

Signature: \_\_\_\_\_

### Please return completed form to:

100 Lighthouse Way Dover, NH 03820  
or email to [foundation@lighthousecu.org](mailto:foundation@lighthousecu.org)

### Please send your logo to: [emily.moore@lighthousecu.org](mailto:emily.moore@lighthousecu.org)

Logo should be sent to [emily.moore@lighthousecu.org](mailto:emily.moore@lighthousecu.org) for use in print materials and web media, as outlined by the sponsorship level. We will accept logos in TIF, EPS, PDF and JPEG format.